

# HEART OF THE SCENIC RIM TOURISM MAP

## HEART OF THE SCENIC RIM TOURISM MAP



### Boonah Visitor Information Centre

Bicentennial Park  
20 Boonah-Fassifern Road, Boonah  
Phone 07 5463 2233

### Rathdowney Information Centre & Historical Museum

82 Mt Lindesay Highway, Rathdowney  
Phone 07 5544 1222

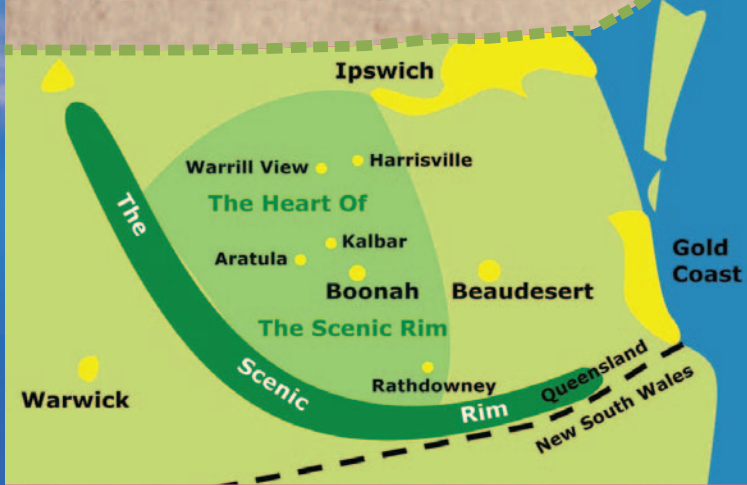
## WELCOME TO THE SCENIC RIM

The Boonah District and surrounds is known as the Heart of the Scenic Rim.

A pleasant hours drive from Brisbane, and a 90 minute drive from the Gold Coast, the heart of the Scenic Rim is so easily accessible. Stunning mountain and country scenery, a large range of accommodation, food outlets, wineries, art galleries, bushwalking trails, national parks, country pubs and much more.

Accommodation types include luxury bed and breakfast (B&B), cottages, cabins, country homes, farm stays, camping, glamping, hotels and motels.

The Scenic Rim is an arc of spectacular mountains lying from south of the Beaudesert, around to the area south west of Ipswich, in South East Queensland, Australia. It is situated within Australia's Green Cauldron which stretches from Byron Bay to the Gold Coast and west towards the Great Dividing Range. The sheer size of the cauldron is breathtaking and shelters a huge diversity of rare flora and fauna, and subtropical rainforests within the rim of mountain ranges.



## PEAK CROSSING, HARRISVILLE & ROSEVALE.

These rustic towns, steeped in history and sited in beautiful countryside are the gateways to the stunning Scenic Rim.

Peak Crossing is a small rural village at the base of the spectacular Teviot Range, consisting of historical and indigenous land marks, one being Ivorys Rock, a conference center and Flinders Peak Mountain. This area is full of natural beauty including a large dazzling lake, Billabong and attractive creeks and rock pools.

The sleepy town of Harrisville has a museum, the Dixon Base Line Monument and Australia's movie pioneer Charles Chauvel. Relax and enjoy fine wines at the wineries before continuing on your journey.

Pass the Old Show Hall at Warrill View where many a young lass met her husband at old style country dances and there are spectacular views of the Scenic Rim.



## KALBAR

The historic town of Kalbar, set in the Fassifern Valley surrounded by majestic mountains, is steeped in history having some of the finest examples of heritage listed Federation architecture.

Settled by German farmers in the 1870s, it prospered as a centre for the district. Many of the buildings still stand today with the shops selling local art, craft fudge and fashion. Visit the bakery, pub, and cafes or spend the night in one of the luxury bed and breakfasts. There are also several excellent dining options.

The local rose farm, plant nurseries, historic churches and cemeteries are well worth a visit. Being within 10 mins of Lake Moogerah, Boonah and five National Parks it is a great place to base yourself to explore this unique region.

## WYARALONG

The Queensland Government built Wyaralong Dam to ensure water supply for the growing population. Amazingly, the 2010/2011 wet season and floods filled the dam on Jan 11 2011 just 25 days after the wall was plugged. Surrounding works were then completed and the dam opened to the public on July 1.

Wyaralong Dam cover over 1200 hectares alongside the Beaudesert /Boonah scenic drive road. It is surrounded by the master-planned Mt Joyce Escape Recreation Park that contains mountain bike trails, horse trails and picnic facilities as well as camping. Keep the family entertained with water based activities and several playgrounds for children. The drive allows you to admire the scenery, take part in the activities or just relax and absorb another wonderful part of the Scenic Rim, which now boasts three major lakes.

## LAKE MOOGERAH

Lake Moogerah is the Scenic Rim's biggest, and arguably most beautiful lake. This area offers great water sports, fishing, and interesting walks for both the experienced and casual bush walker, as well as a trail of antique stores.

Types of accommodation available include luxury bed & breakfasts, resorts, houses and designated camping reserves. Get a feel for the area by circumnavigating the lake on Lake Moogerah Road and stop off for walk or picnic at one of the viewing areas along the way. Mount Greville, Spicers Gap and the Governors Chair offer spectacular views of the lake.

With so much of offer, you can also enjoy fine dining at a local restaurant, a romantic dinner for two, afternoon of high tea and live music at a country house or a traditional pub meal down at the local. Moogerah makes an ideal base for a tour of the beautiful Scenic Rim.

## DRIVING DISTANCES

### From outside the Scenic Rim:

Brisbane CBD - Boonah	86.4km	1hr25min
Brisbane CBD - Beaudesert	69.1km	1hr13min
Brisbane CBD - Tamborine Mt	68.7km	1hr11min
Nerang - Canungra	25.7km	25min
Nerang - Tamborine Mt	33.1km	40min
Ipswich - Boonah	48.4km	40min
Warwick - Boonah	83.4km	1hr3min

### Inside the Scenic Rim:

Boonah - Beaudesert	37km	41min
Boonah - Rathdowney	47km	40min
Beaudesert - Canungra	26km	23min
Beaudesert - Rathdowney	32km	24min
Canungra - Tamborine Mt	9km	10min

## BOONAH

Boonah township is nestled in a unique natural landscape of soaring mountain ranges and rural serenity, offering a quaint country shopping experience with quality produce from local suppliers.

Relax and dine at one of Boonah's many quality restaurants, cafes, bistros or historic country pubs. Stay for a while in or around Boonah with a huge variety of accommodation styles – motels, B&B, self-contained cottages, heritage houses, apartments, glamping, conference and adventure centre.

Visit art galleries, wineries, a donkey farm, historic village or the country golf club. Be amazed by the views from Mount French National Park lookout and Green Hills Rd with a 360° view of the entire Scenic Rim. Adventurers can take to the sky for a birds eye view or climb Frog Buttress.

## LAKE MAROON AND COOCHIN

Situated between Rathdowney and Boonah is picturesque Lake Maroon. There are excellent picnic facilities at both Slatter Park and adjacent to the boat ramp, with bbqs, picnic tables, shelters and toilets.

Whether you enjoy sailing, canoeing, water skiing, fishing or just relaxing by the water, the spectacular mountain views make it well worth visiting.

You can take Burnett Creek Rd that leads around the lake with the choice of going to White Swamp, which is popular with 4WD enthusiasts, or onto Carneys Creek Rd which will either take you onto Rathdowney Road at Coochin or up to Queen Mary Falls. The Upper Portals walk in Mt Barney National Park is also accessed from here. There are nature based activities and accommodation ranging from camping to cottages.

## QUEEN MARY FALLS & KILLARNEY

Fourteen kilometres from Boonah on the Boonah-Rathdowney Road turn right into Carneys Creek Rd, otherwise known as the Falls Tourist Drive.

This scenic drive will take you up to the Headwaters of the Condamine River, the start of the longest river system in Australia and home to many beautiful waterfalls. Teviot Falls is at the top of the Head Road. Follow the road toward the Village of Killarney. Enjoy the magnificent views from Carrs Lookout. Continue on Spring Creek Road to Queen Mary Falls National Park, then on to Daggs Falls and Browns Falls accessed from the park at the bottom of the mountain. 4WDs can access the Condamine River Road which crosses the Condamine River 14 times.

Also in this area you will find cafes, cabins, motels, and camping grounds.

## RATHDOWNEY & MT BARNEY

Rathdowney is the gateway to numerous walks and climbs available in the various National Parks of the Border Rangers National Park and the World Heritage listed and designated wilderness of Mt Barney National Park.

Discover Mt Barney from the small town of Rathdowney. It is close to some of the areas of greatest biodiversity in Australia. Enjoy the wilderness areas, eucalypt forests and other habitats consisting of many rare and restricted plant species.

Take time to enjoy the region staying in intimate cottages for couples, farm stay accommodation for families or designated camping grounds.

Visitors are encouraged to call at the Rathdowney Visitors Information Centre and Museum for further information.





**FLOATING IMAGES HOT AIR BALLOON FLIGHTS**  
Balloon flights, gift vouchers, accommodation packages.  
www.floatingimages.com.au Ph 07 3294 8770

**NORMANBY WINES**  
Cellar Door Open Daily 10am-5pm.  
www.normanbywines.com.au Ph 07 5467 1214

**PARADINE ESTATE WINERY**  
Boutique winery and cellar door tastings.  
Ph 07 5467 1120

**PTERODACTYL HELICOPTERS**  
Helicopter wine tours.  
www.ipswichheli.info Ph 0417 727 532

**THE WORKSHOPS RAIL MUSEUM**  
Interactive museum at active railway workshops.  
www.theworkshops.qm.qld.gov.au Ph 07 3432 5100

**SCENIC RIM VIEW COTTAGES**  
Five star luxury cottages for couples.  
www.scenicrimviewcottages.com.au Ph 07 5464 6508

**BARTONS ROSE FARM**  
Potted roses year round. Display gardens.  
www.bartonsrosefarm.com.au Ph 07 5463 8029

**WISS HOUSE BED AND BREAKFAST**  
Heritage award winning queenslander accommodation.  
www.wisshouse.com.au Ph 07 5463 9030

**AMONG THE GUMS**  
Self contained, three bedroom country home.  
www.amongthegums.com.au Ph 0414 594 318

**ARATULA VILLAGE GAP VIEW MOTEL**  
• \$70 • Queen Bed • Air-Con • Ensuite • \$70 •  
www.aratulavillage.com.au Ph 07 5463 8161

**THE BUNYIP SCENIC RIM RESORT**  
Luxury accommodation for couples and small groups.  
www.bunyipscenicrimresort.com.au Ph 0408 016 164

**LAKE MOOGERAH CARAVAN PARK**  
Camping and caravan park.  
www.moogerah.com Ph 07 5463 0141

**MILLYS @ MOOGERAH**  
Tranquil S/C farmhouse. Awesome lake views.  
www.millysatmoogerah.com Ph 0427 159 027

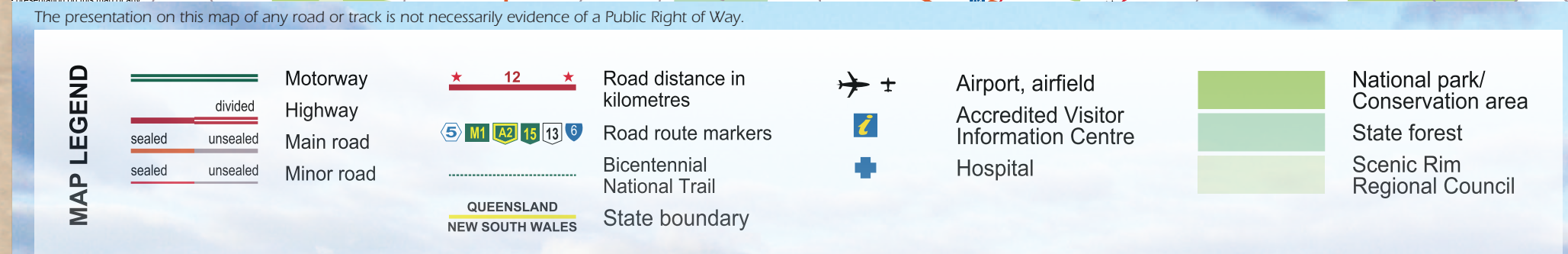
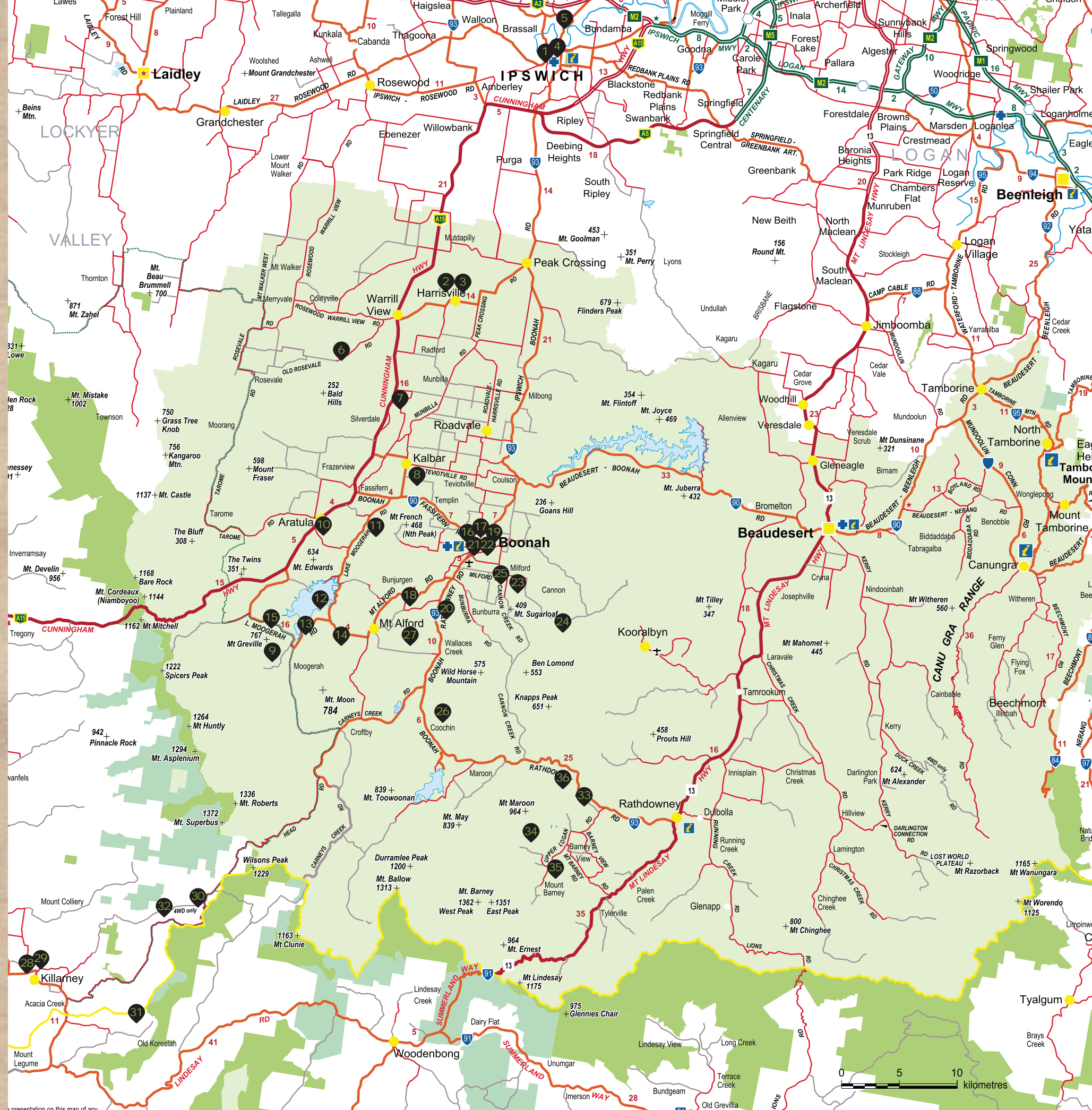
**MOUNT ALFORD LODGE**  
Conference Centre - Retreats - Functions  
www.mountainfordlodge.com.au Ph 07 5463 0999

**ZENGARRA COUNTRY HOUSE**  
B&B, fine dining, live classical music.  
www.zengarra.com Ph 07 5463 5600

**ART AND SOUL GALLERY**  
Contemporary art & unique gifts.  
www.artandsoulgallery.com.au Ph 07 5463 2003

**BROOK COTTAGE BED & BREAKFAST**  
Cosy, comfortable cottage. Pet friendly.  
www.brookcottageboonah.com.au Ph 07 5463 1705

**BUNJURGEN ESTATE VINEYARD**  
Award Winning Local Wines and Port  
www.bunjurgenestatevineyard.com.au Ph 07 5463 0270



# HEART OF THE SCENIC RIM TOURISM MAP

**BOONAH MOTEL**  
Clean, comfortable, affordable accommodation. Central location.  
www.boonahmotel.com Ph 07 5463 1944

**ECO COTTAGES AND DONKEY FARM**  
Great holidays for couples and families.  
www.destinyboonah.com Ph 07 3333 2622

**Dugandan Hotel**  
Great Food - Cold Beer - Fine Wine  
www.thedugle.com.au Ph 07 5463 1048

**FAR OUTDOORS**  
Camping and adventure gear. Homebrew supplies.  
www.faroutdoors.com.au Ph 07 5463 4114

**HILLY RIDGE**  
Exclusive private house for holiday rental.  
www.hillyridge.com.au Ph 07 3832 2883

**KETCHUP'S BANK GLAMPING**  
A truly unique eco-retreat for couples.  
www.ketchupsbankglamping.com.au Ph 07 5463 1269

**THE OLD CHURCH B & B**  
Lovely rooms in peaceful rural surrounds.  
www.oldchurchbnnboonah.com.au Ph 07 5463 2558

**BILYANA COTTAGES**  
Self contained accommodation.  
www.bilyanacottages.com Ph 07 5463 6249

**VANBERRY COTTAGE HOST FARM**  
Cottage, homestead, pool. Panoramic mountain views.  
www.vanberrycottage.com.au Ph 07 5463 0252

**KILLARNEY SUNDOWN MOTEL**  
Self contained, pet friendly, wireless internet.  
Ph 07 4664 1618

**KILLARNEY VIEW CABINS AND CARAVAN PARK**  
Self-contained cabins, cottage, powered sites, camping.  
www.killarneyviewcaravanpark.com.au Ph 07 4664 1522

**OAKLEA BED & BREAKFAST & COTTAGES**  
Homestead or fully self contained cottages.  
www.oakleacottages.com.au Ph 07 4664 7161

**QUEEN MARY FALLS CARAVAN PARK & CAFE**  
Caravan park, cabins & cafe amongst nature.  
queenmaryfalls@bigpond.com Ph 07 4664 7151

**SPRING CREEK MOUNTAIN CAFE & COTTAGES**  
Self contained luxury cottages. Onsite restaurant.  
www.springcreekcottages.com.au Ph 07 4664 7101

**BIGRIGGEN PARK**  
Bush camping & caravanning.  
www.bigriggen.com.au Ph 07 5463 6190

**BARNEY CREEK VINEYARD COTTAGES**  
Indulge your senses in a secluded paradise.  
www.bedsandreds.com Ph 07 5544 3285

**LILLYDALE FARMSTAY**  
Farm activities in self contained accommodation.  
www.lillydale.com.au Ph 07 5544 3131

**TUCKEROO COTTAGES & GARDENS**  
Open plan self-contained cottages for couples.  
www.tuckeroocottages.com.au Ph 07 5463 6263